



High School Computer Science and Computing Enrollment Report



School Year
2021-2022

Computer Science Initiative

Student Enrollment for 2021-2022

- The data within this information was compiled using the Arkansas School District Cycle 2 Report submissions.
- Districts are required to submit student enrollment numbers, in addition to other data, for the Cycle 2 Report on or before October 15th of each year.
- The numbers contained within this information are enrollment numbers as of October 15th, these numbers are what school funding is based on, and, due to various factors, may change or differ from student completion numbers.

Computer Science Initiative Student Enrollment for 2021-2022

- The CS Course Enrollment data on page 10 is unduplicated student data. This represents the number of **individual students** in Arkansas enrolled in at least one CS course for the 2021-22 school year.
- The data on pages 11-18 is duplicated student data. This represents all course enrollments, which includes approximately 1,107 students taking more than one CS course in the 2021-22 school year.

Computer Science Courses

The following courses are used as the baseline to measure computer science student enrollment numbers for the 2014-2015, 2015-2016, and 2016-2017 school years:

- Computer Science and Mathematics;
- Essentials of Computer Programming;
- Programming I and Programming II;
- Java I and Java II;
- Intro to Object Oriented Programming;
- Computer Science and Software Engineering;
- Computer Game Design and Development;

(continued on next page)

Computer Science Courses

(continued)

- Intro to Mobile Application Development;
- Mobile Application Development (MAD) I and MAD II;
- College Board Advanced Placement (AP) Computer Science Principles;
- College Board AP Computer Science A; and
- International Baccalaureate (IB) Computer Science (HL & SL)
- Computer Science Internship I and II
- Other Concurrent Credit Computer Science
- ADE Approved Computer Science

Computer Science Courses

The following courses are used as the baseline to measure computer science student enrollment numbers for the 2017-2021 school years:

- Levels 1 and 3 of:
 - Computer Science with Programming/Coding Emphasis,
 - Mobile Application Development,
 - Computer Science with Networking/Hardware Emphasis
 - Robotics, and
 - Computer Science with Information Security Emphasis.
 - AP Computer Science Principles
 - AP Computer Science A

(continued on next page)

Computer Science Courses

(continued)

- Levels 1 and 3 of:
 - Advanced Programming,
 - Advanced Networking,
 - Advanced Information Security
 - Advanced Game Design
 - IB Computer Science HL & SL
 - ADE Computer Science Independent Study
 - ADE Computer Science Internship
- Concurrent Credit Computer Sciences
- Weighted Concurrent Credit Computer Sciences

Computer Science Courses

The following courses are used as the baseline to measure computer science student enrollment numbers for the 2021-2022 school year:

- Years 1-3 of the following ADE developed courses:
 - Artificial Intelligence & Machine Learning
 - Computer Engineering
 - Cybersecurity
 - Data Science
 - Game Development and Design
 - Mobile Application Development
 - Networking
 - Programming
 - Robotics

(continued on next page)

Computer Science Courses

(continued)

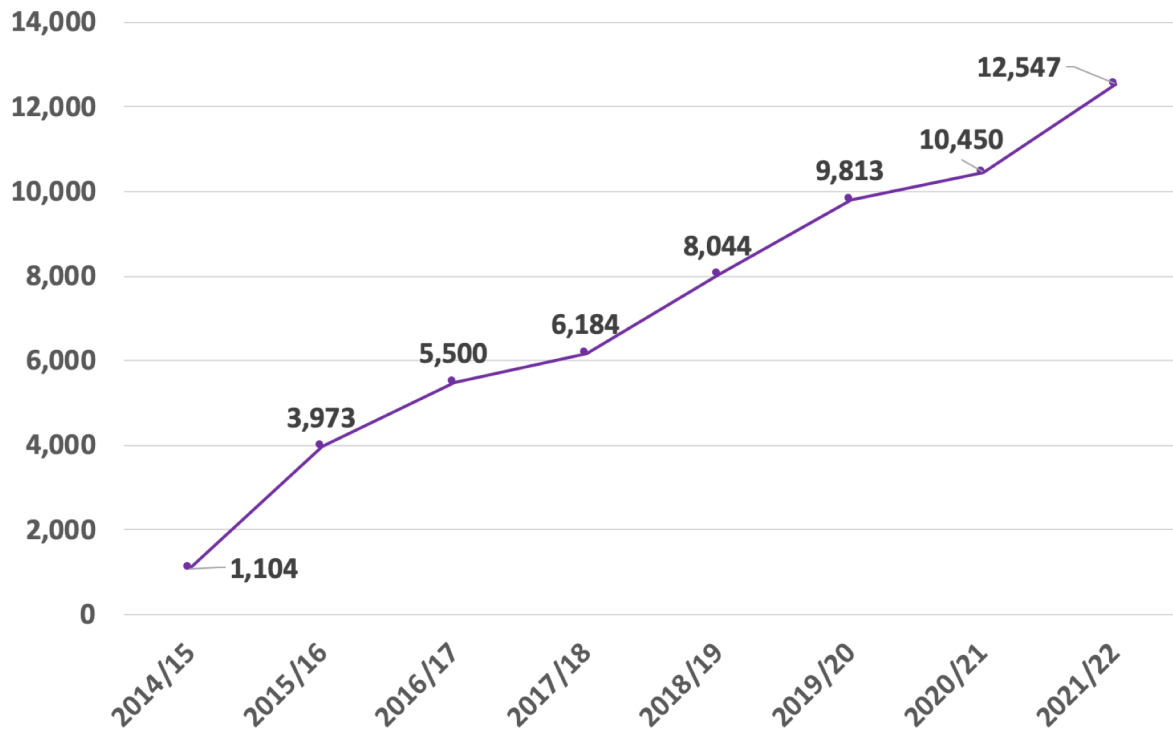
- College Board Advanced Placement (AP) Computer Science Principles
- College Board Advanced Placement (AP) Computer Science A
- International Baccalaureate (IB)
- Computer Science SL & HL
- Computer Science Independent Study
- Computer Science Internship
- Career Practicum - Computer Science
- Concurrent Credit Computer Sciences
- Weighted Concurrent Credit Computer Sciences

Standards and course codes for these courses are available at:

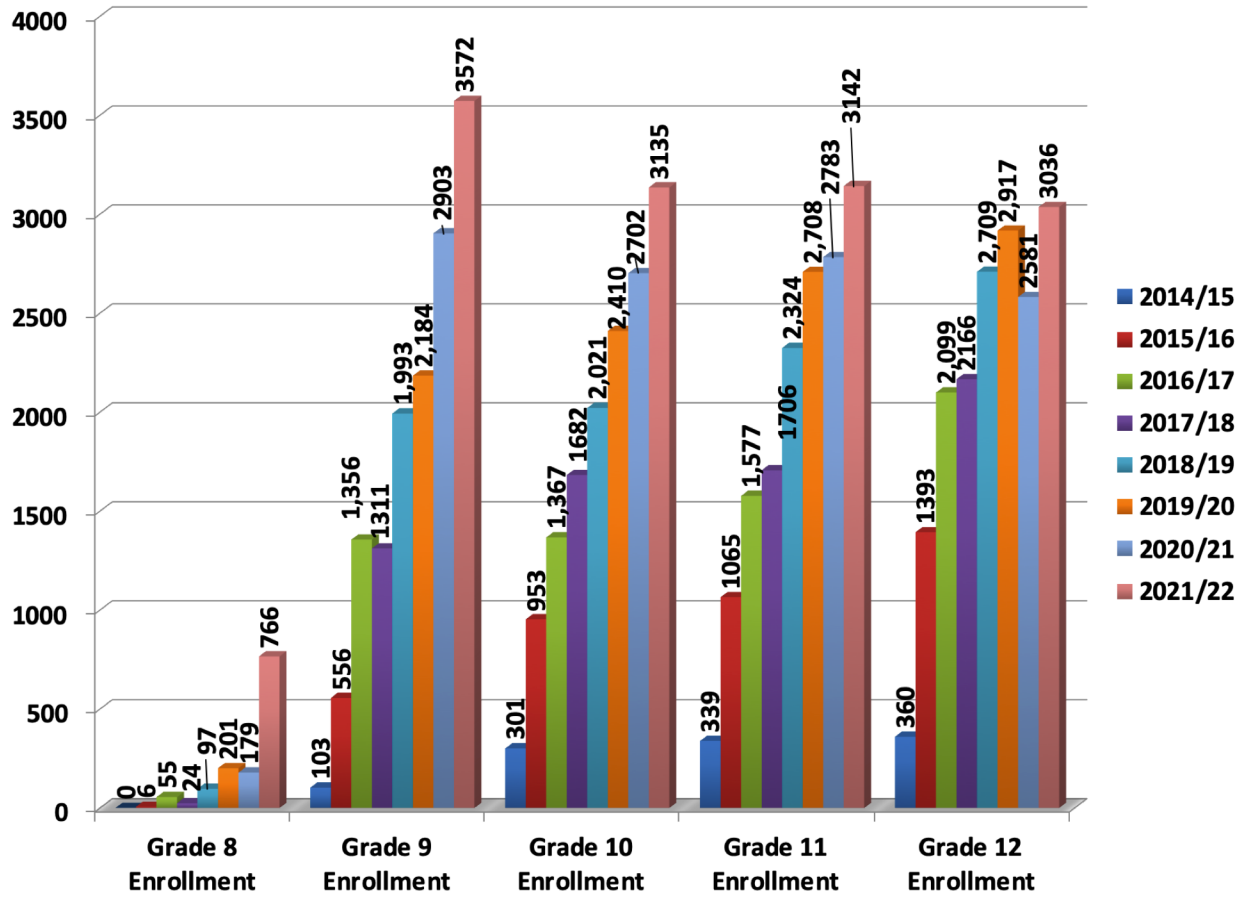
<https://csforar.info/courses>

High School CS Course Enrollment

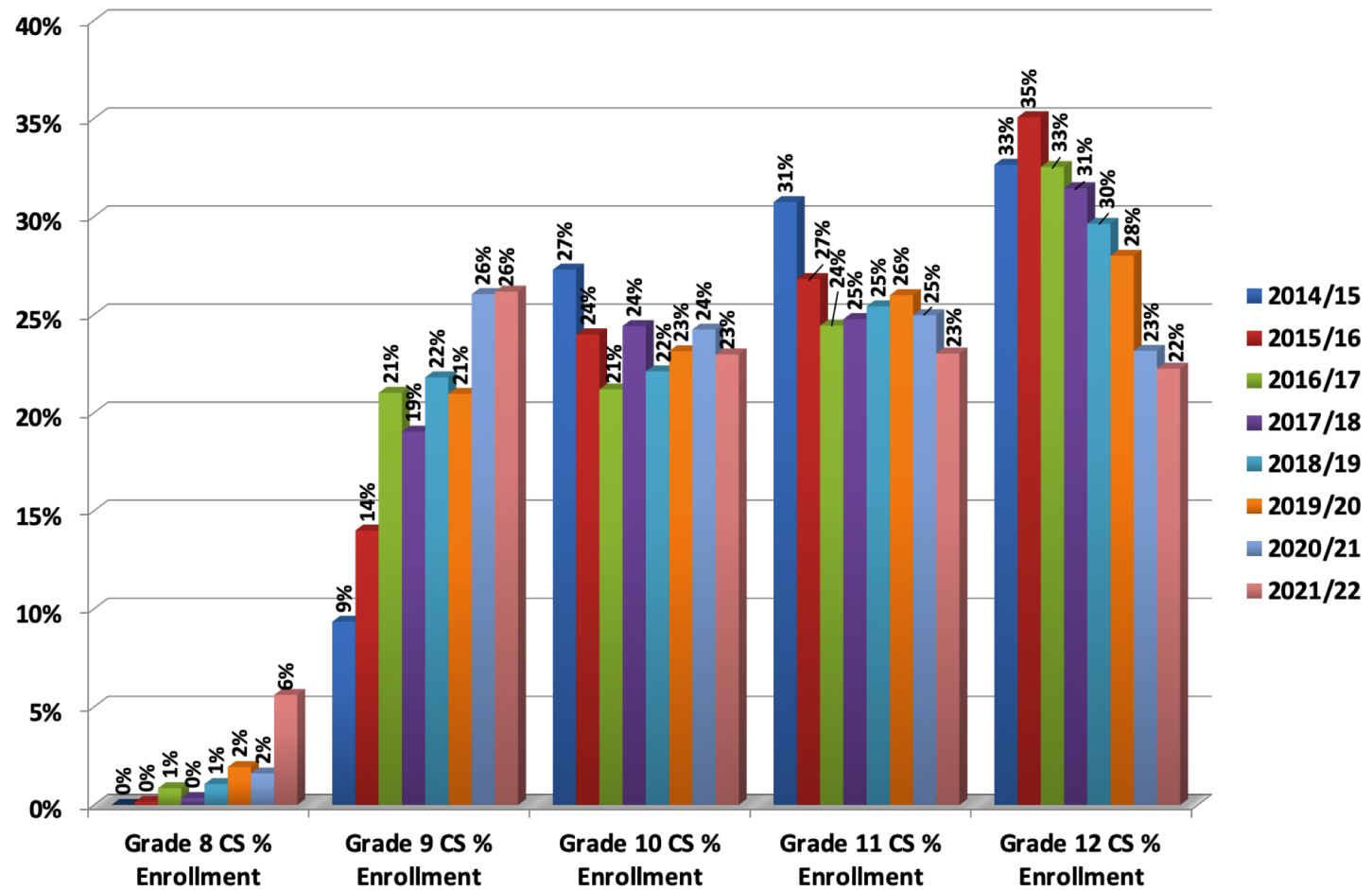
- 2021/2022 – 12,547
 - Increase of 2,097 students which is a 20% increase over 2020/21
- 2020/2021 – 10,450
 - Increase of 637 students which is a 6.5% increase over 2019/20
- 2019/2020 – 9,813
 - Increase of 1,769 students which is a 22% increase over 2018/19
- 2018/2019 – 8,044
 - Increase of 1,860 students which is a 30% increase over 2017/18
- 2017/2018 – 6,184
 - Increase of 684 students which is a 12% increase over 2016/17
- 2016/2017 – 5,500
 - Increase of 1,527 students which is a 38.4% increase over 2015/16
- 2015/2016 – 3,973
 - Increase of 2,869 students which is a 260% increase over 2014/15
- 2014/2015 – 1,104



CS Course Enrollment Numbers by Grade



Computer Science Courses Enrollment Percentage by Grade



CS Male/Female Student Enrollment

2021/2022

- 9,602 (70%) Male
- 4,052 (30%) Female

2020/2021

- 8,013 (72%) Male
- 3,135 (28%) Female

2019/2020

- 7,568 (73%) Male
- 2,852 (27%) Female

2018/2019

- 6,660 (73%) Male
- 2,484 (27%) Female

2017/2018

- 5,093 (74%) Male
- 1,796 (26%) Female

2016/2017

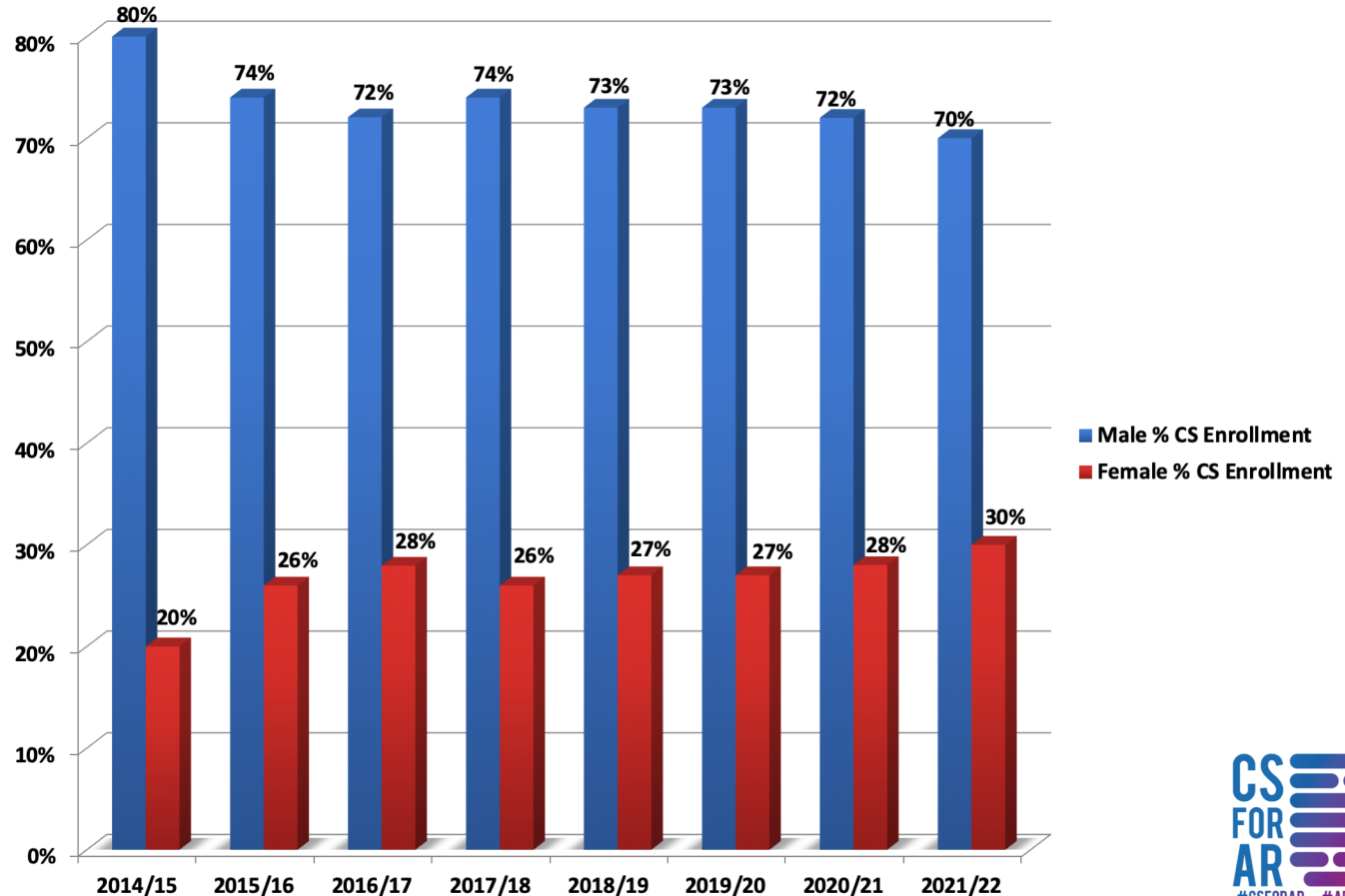
- 4,703 (72%) Male
- 1,824 (28%) Female

2015/2016

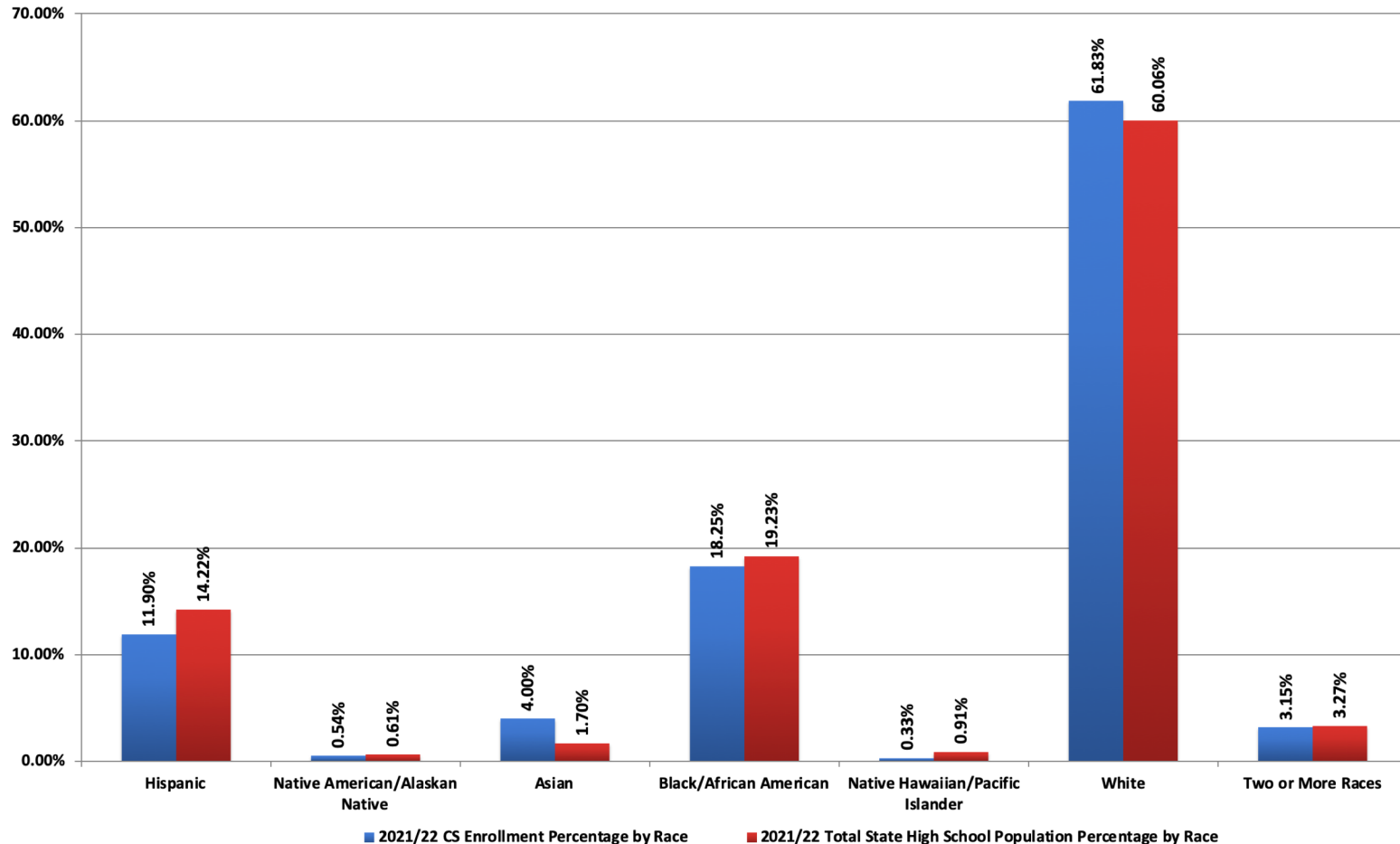
- 2,942 (74%) Male
- 1,031 (26%) Female

2014/2015

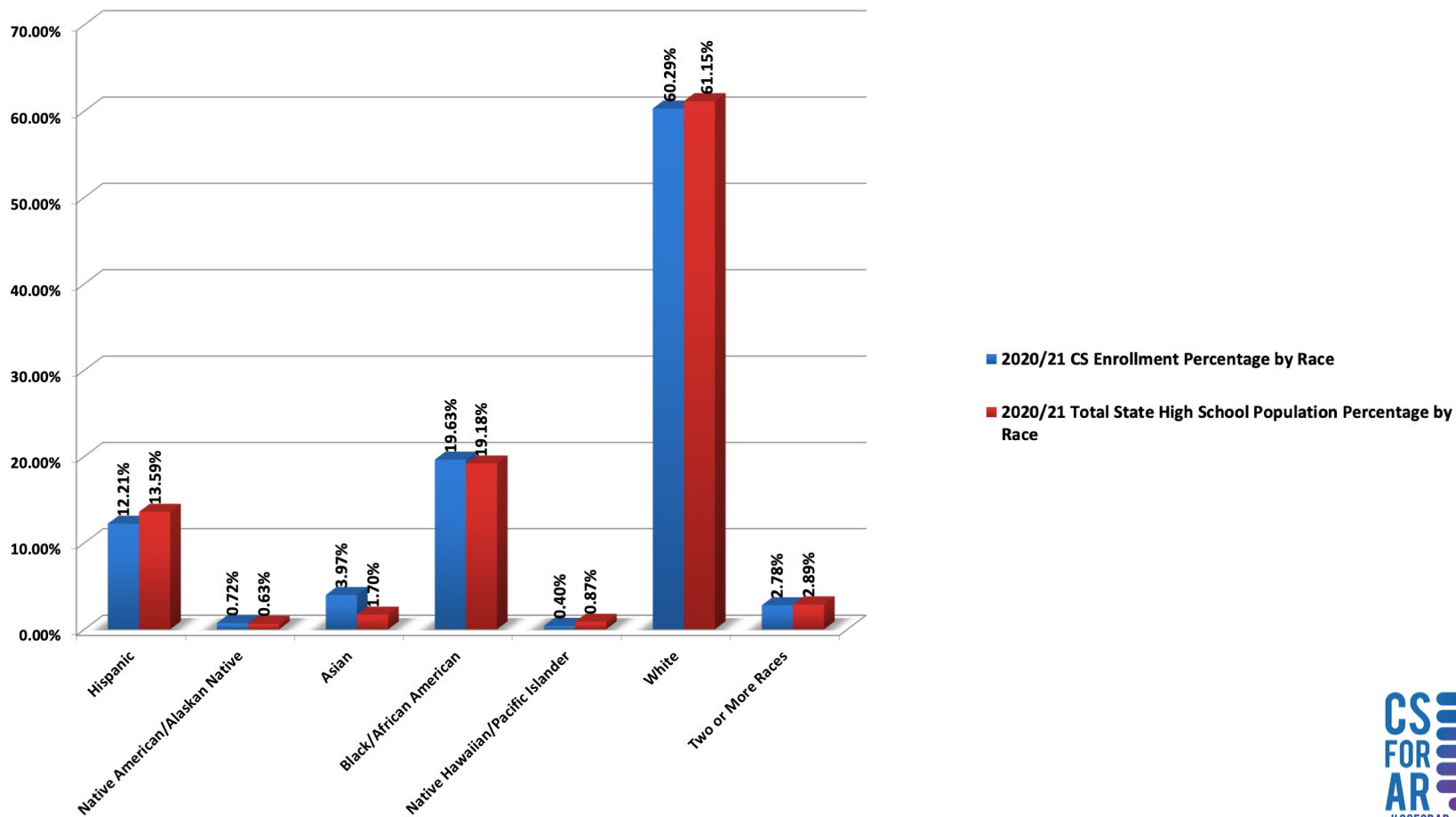
- 880 (80%) Male
- 223 (20%) Female



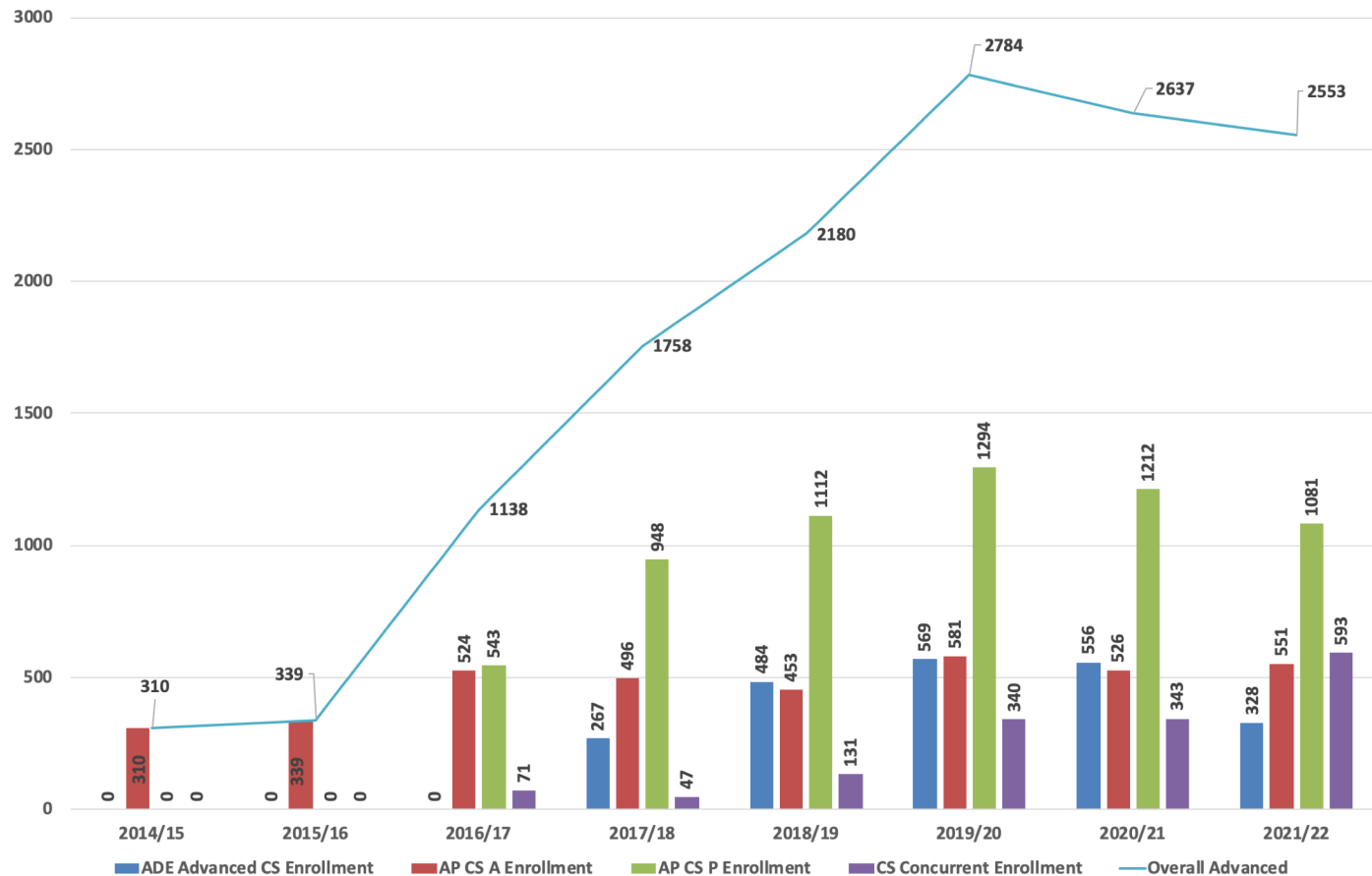
2021/22 Enrollment Percentage by Race



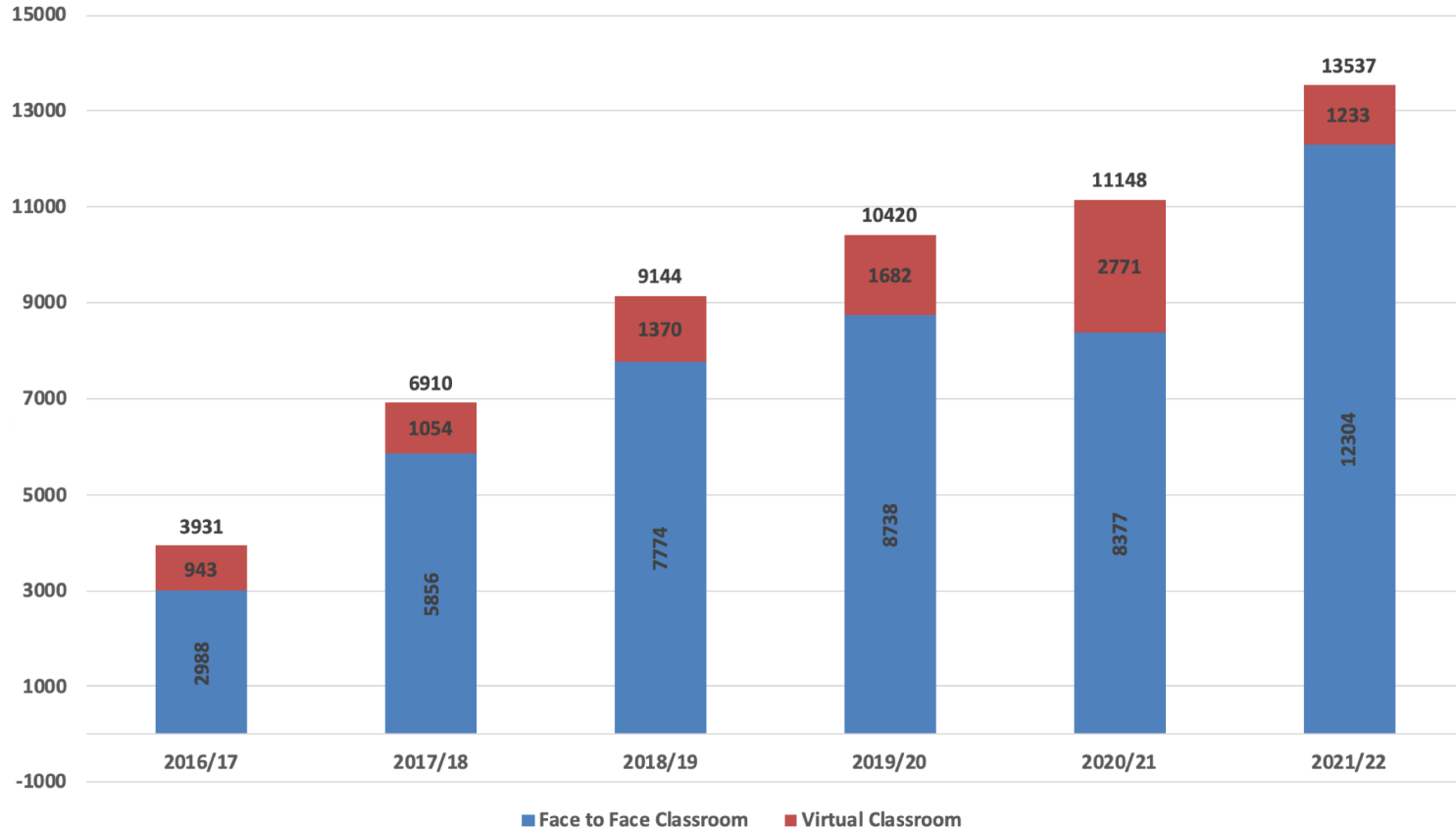
2020/21 Enrollment Percentage by Race



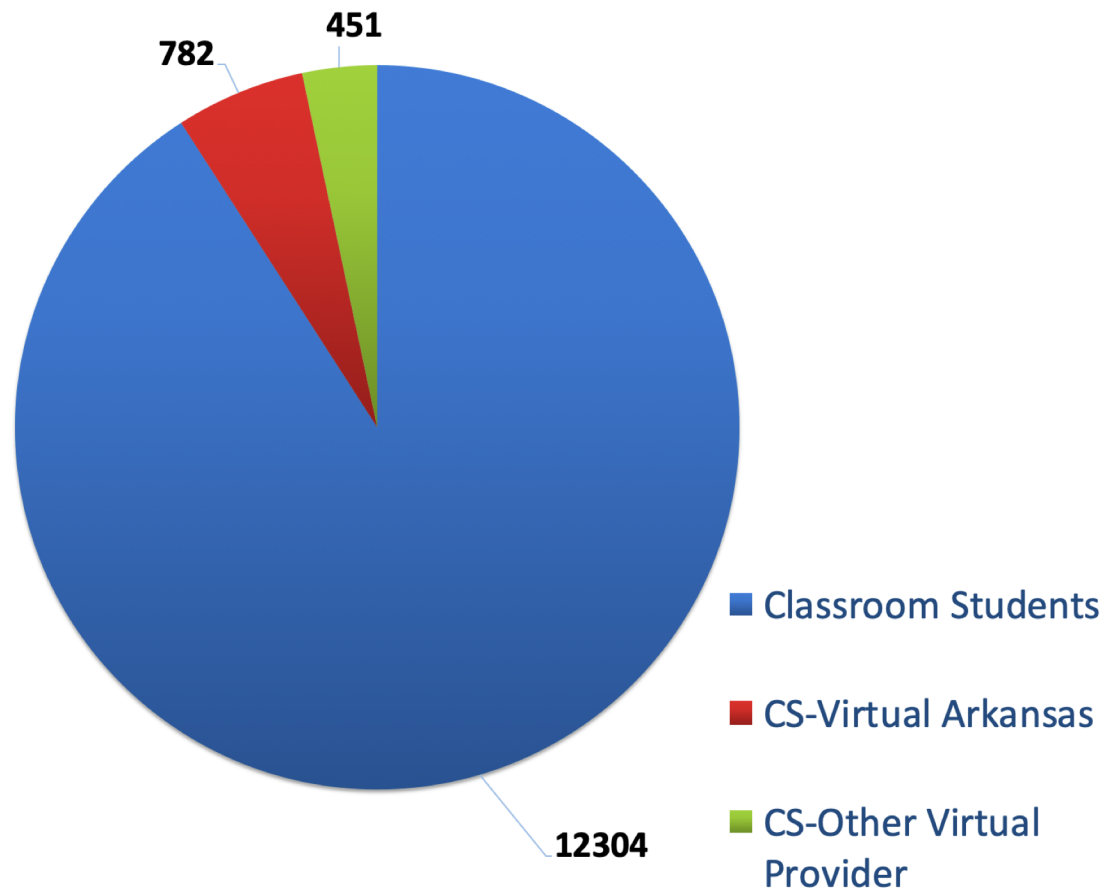
Higher / Advanced Level CS Course Enrollment



Computer Science Course Classroom and Virtual Environment Enrollment



2021/22 Virtual Environment Enrollments



Contact Information

Anthony Owen

State Director of Computer Science Education

anthony.owen@ade.arkansas.gov

ADE Office of Computer Science

CSforAR@ade.arkansas.gov

Find More Information Here:

<http://cs.arkansas.gov/>